



# UNDER CANOPY LIGHTING

INSTALLATION MANUAL

---



# Table of Contents

02  
Introduction

03  
Equipment

04  
Optional Equipment

05  
General Guidelines

06  
Daisy-Chaining

07  
Installation

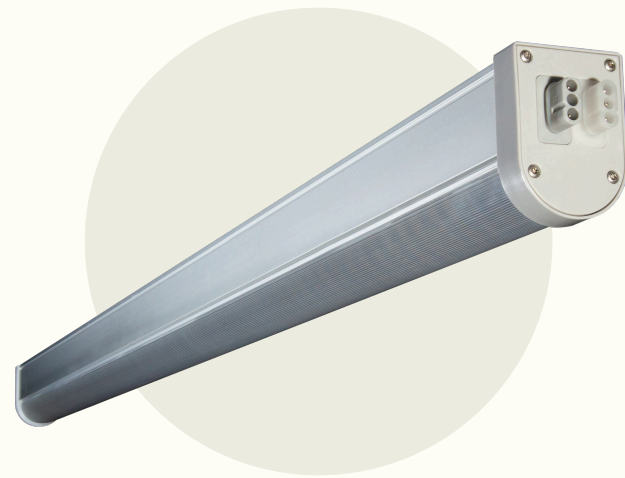
# INTRODUCTION

This manual provides installation instructions for the **Boost XE** and **Infinity XE** LED light bars for under canopy lighting.

---

- + Please contact customer support with any questions not covered in this guide.
- + Visit Thrive Agritech's website to view an under canopy installation video.

# EQUIPMENT



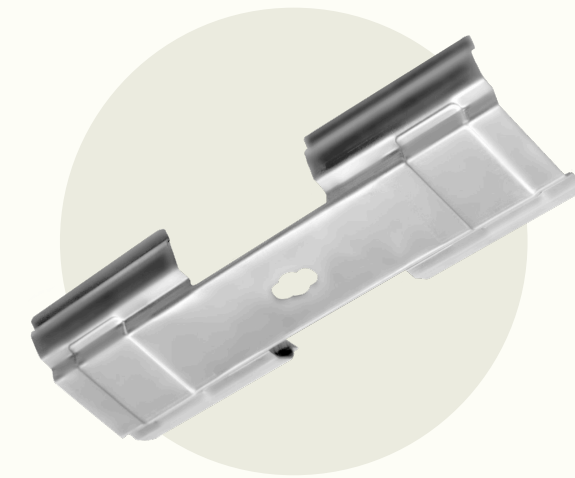
**Boost XE or Infinity XE**

TBAR-120W-FS2 or TBAR-60W-FS2



**Mounting Brackets**

BDAFR8 or BDAFR14



**Interconnection Clips**

INCLIP-BD



**Power Cables**

BDPCX-XX



**End Caps**

ENDCAP-BD



# OPTIONAL EQUIPMENT



Dimming  
Interconnection Cables

DIMINCX-XX



Dimming Adapter  
Cable

CNTRL-XE



Quick Connect  
Dimming Cable

CNTRL-DM5



Power Interconnection  
Cables

BDINCX-XX



Controller

CNTRL-V2



# GENERAL GUIDELINES

**01**

Confirm the overall integrity of the light bar prior to installation.

**02**

Maintain at least 8 inches (0.2 meters) between the light fixture and any combustible materials.

**03**

Keep the light fixture away from sources of heat.

**04**

The LED light is an indoor fixture operated within an ambient temperature range of -20oC to +30oC.

**05**

Ensure power is off before installation. Installation must be carried out by qualified personnel.

**06**

To clean the light fixture, switch power off and use a dry cloth without corrosive cleaning agents.



# DAISY-CHAINING

The maximum number of lights that can be daisy-chained together at various input voltages is shown in the tables. Also shown is the nominal current supplied to each fixture. 16 AWG wire is recommended.

Boost XE LED Light

| Parameter  | 120 Volts  | 240 Volts   | 277 Volts   |
|--|------------|-------------|-------------|
| Nominal current / fixture                          | 1.1A       | 0.50A       | 0.43A       |
| Max # of fixtures linked together in a daisy-chain | 7 fixtures | 15 fixtures | 17 fixtures |

Infinity XE LED Light

| Parameter  | 120 Volts   | 240 Volts   | 277 Volts   |
|--|-------------|-------------|-------------|
| Nominal current / fixture                          | 0.54A       | 0.25A       | 0.22A       |
| Max # of fixtures linked together in a daisy-chain | 14 fixtures | 31 fixtures | 35 fixtures |



# INSTALLATION

A view of a completed installation consisting of 2 lines of under canopy lights.





1. Position the Mounting Brackets on the bench to support installation of the first under canopy light

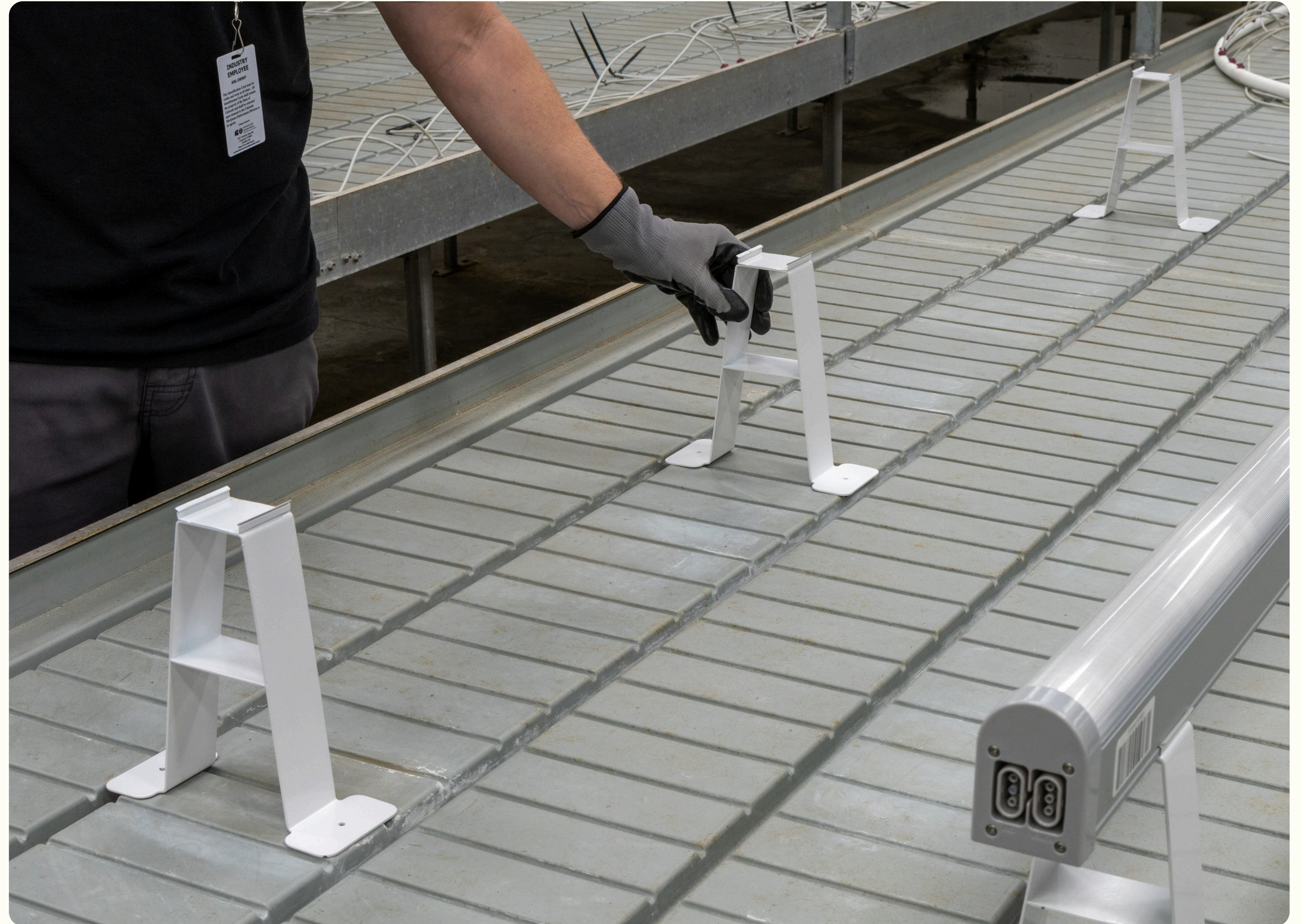


Fig 1. Placement of Mounting Brackets on the bench



2. Roll the under canopy light fixture onto the Mounting Bracket so that it snaps in place



Fig 2. Snap the light into the Mounting Brackets



3. Repeat Steps 1 & 2 for the next fixture in line with the first. Daisy chain the two under canopy lights together



Fig 3. Connect the first two lights together



4. Once the lights are connected, attach the interconnection clip (INCLIP-BD) as shown in Fig 4 to secure the lights mechanically and electrically



Fig 4. Secure the lights to together with the Interconnection Clip



5. Repeat steps 1-4 for all under canopy lights in the grow room. Note the maximum number of lights that can be connected (daisy-chained) in the tables (also shown on page 06 & in the under canopy light bar datasheets)

Boost XE LED Light

| Parameter  | 120 Volts  | 240 Volts   | 277 Volts   |
|--|------------|-------------|-------------|
| Nominal current / fixture                          | 1.1A       | 0.50A       | 0.43A       |
| Max # of fixtures linked together in a daisy-chain | 7 fixtures | 15 fixtures | 17 fixtures |

Infinity XE LED Light

| Parameter  | 120 Volts   | 240 Volts   | 277 Volts   |
|--|-------------|-------------|-------------|
| Nominal current / fixture                          | 0.54A       | 0.25A       | 0.22A       |
| Max # of fixtures linked together in a daisy-chain | 14 fixtures | 31 fixtures | 35 fixtures |



6. Connect the white power cables to the lights (Fig 5), and the black dimming cables (Fig 6) if using dimming



Fig 5. Power connections



Fig 6. Dimming connections



7. If using dimming, connect the dimming adapter cable (p/n CNTRL-XE) on the last light in the daisy-chain (Fig 7). Connect the other end of the dimming adapter cable to dimming quick connect cable (p/n CNTRL-DM5) (Fig 8).



Fig 7. Dimming Adapter Cable connection



Fig 8. Dimming Quick Connect cable connection



8. Connect the Quick Connect dimming adapter cable to the dimming controller



Figure 9. Quick Connect Dimming Cable connection to Dimming Controller box



9. To remove the lights from the mounting brackets, use a flathead screwdriver to remove the Interconnection Clips and to dislodge the lights from the Mounting Brackets




Fig 10. Removal of Interconnection Clips



Fig 11. Disengage lights from Mounting Brackets

 <https://www.thriveagritech.com/>

 [info@thriveagritech.com](mailto:info@thriveagritech.com)

 1 (800) 205-7216