

Installation Manual

Strata *LED Light*



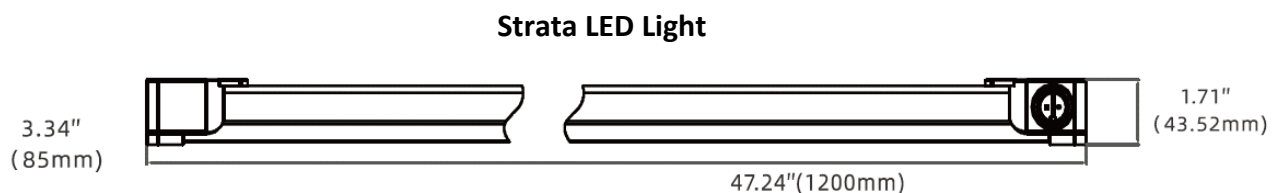
Background

This manual provides instructions for the installation and electrical interconnections of the Strata LED light. Please contact customer support with any installation questions.

General Guidelines

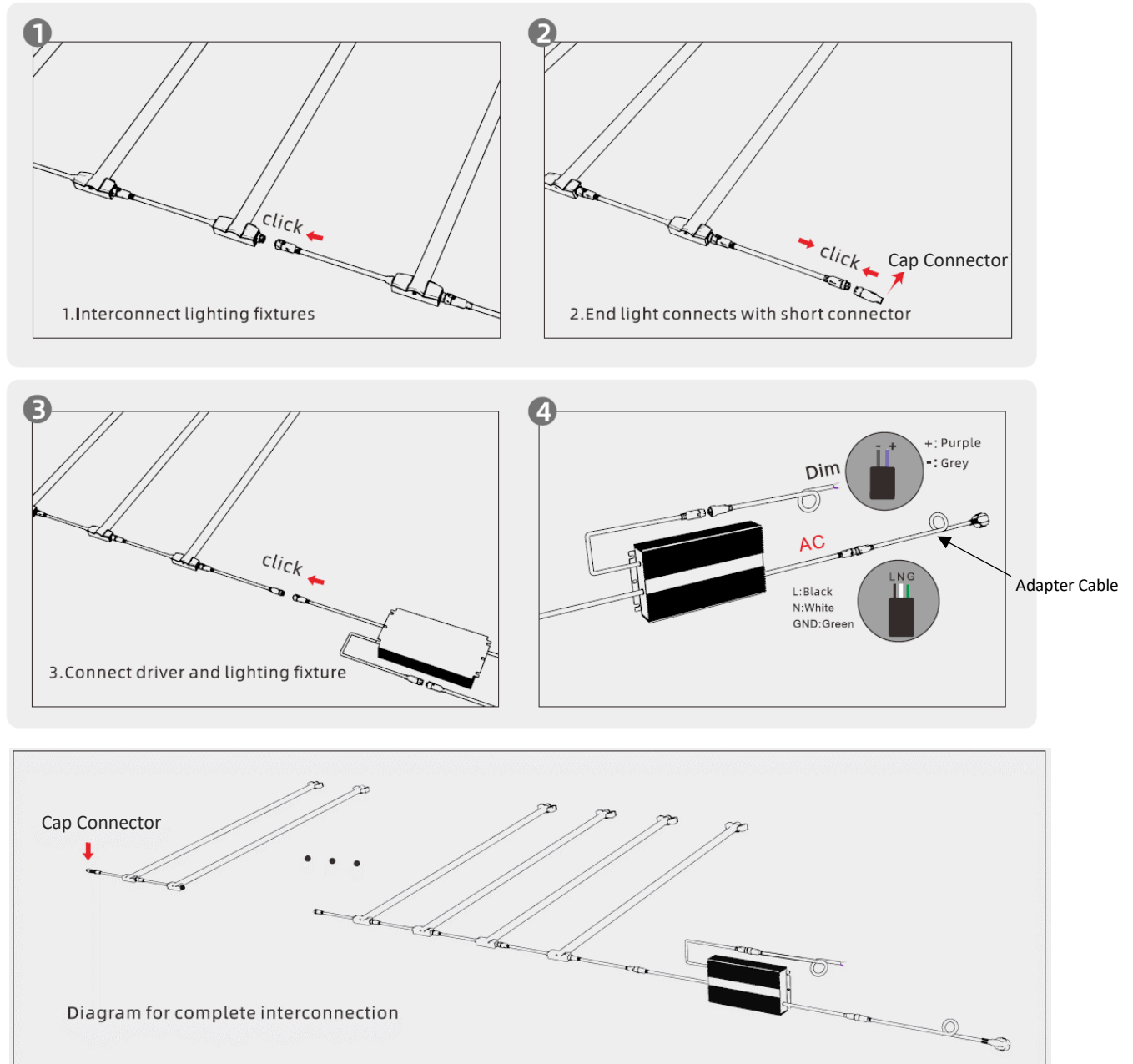
- ***The minimum and maximum number of lights to be connected in a daisy chain to a driver must be strictly adhered to – see page 3.***
- The Strata light will not be powered unless the “Cap Connector” is attached to the cable receptacle on the last Strata light in the daisy chain – see page 5.
- Confirm the overall integrity of the light fixture prior to installation.
- Maintain at least 8 inches (0.2 meters) between the light fixture and any combustible materials.
- Keep the light fixture away from sources of heat.
- The LED light is an indoor fixture that should be operated within an ambient temperature range of -20°C to 35°C.
- Ensure power is off before installation. Installation must be carried out by qualified electricians.
- To clean the light fixture, switch power off and use a dry cloth without corrosive cleaning agents.

Dimensions



Electrical Connections

Strata LED lights can be electrically connected for both power and dimming as shown in the following figures. **The Cap Connector must be plugged into the last Strata light cable receptacle to power up the lights (See Figure 2 below).**



Drivers & Daisy-Chaining

Thrive Agritech offers external drivers for the Strata light at 320 watts and 880 watts. The minimum and maximum number of lights that can be connected in a daisy-chain for each driver is shown in the table below.

Configuration	White	Blue, Red, Far Red
Min # of lights with 320W Driver	5	5
Max # of lights with 320W Driver	10	10
Min # of lights with 880W Driver	14	13
Max # of lights with 880W Driver	28	26