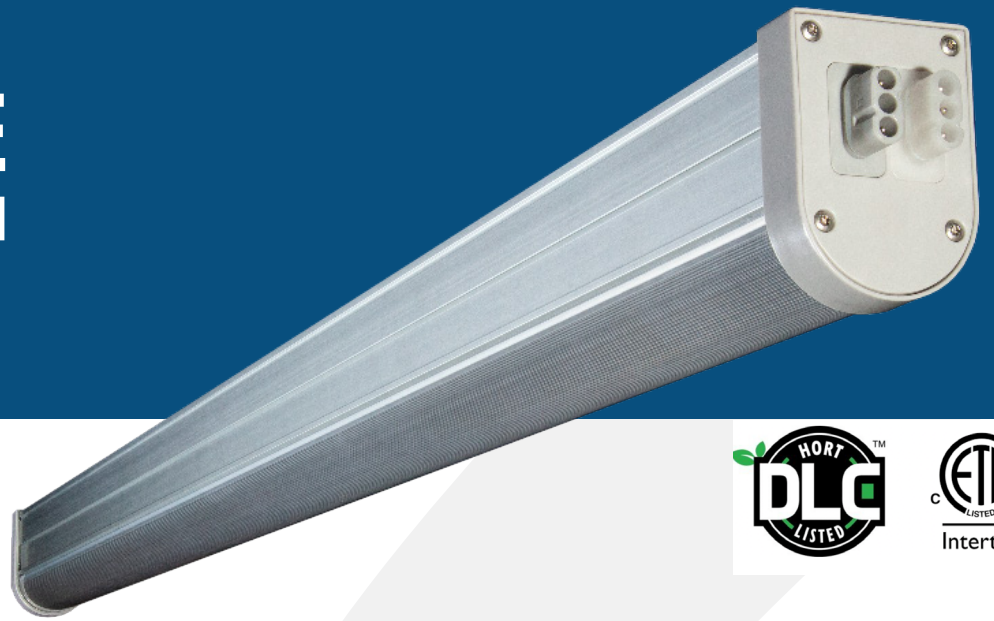




# THRIVE AGRITECH

222 Broadway New York, NY 10038  
(800) 205-7216  
thriveagritech.com  
info@thriveagritech.com



# Boost

## LED Light Bar

Boost is a high efficiency LED grow light designed to optimize plant growth for cannabis, leafy greens, vegetables and floriculture.

### APPLICATIONS & FEATURES

- Multi-tier cannabis flower & veg up to 1,000  $\mu\text{mol}/\text{m}^2/\text{sec}$
- Single-tier leafy greens 200-300  $\mu\text{mol}/\text{m}^2/\text{sec}$
- 0-10V dimming
- Simple wiring and daisy-chaining
- DLC Listed
- 5-year warranty

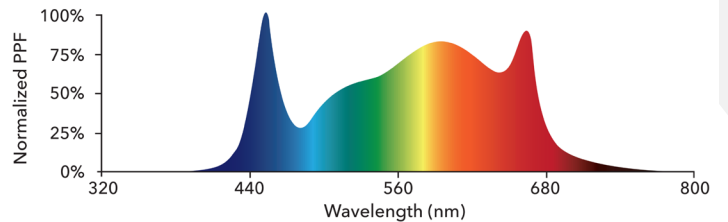
### SPECIFICATIONS

- BST-130W-FS2
- 130W
- 2.4  $\mu\text{mol}/\text{joule}$  Efficiency
- Weight: 5.2 lbs. (2.4 Kg)
- 100V-277V Input Voltage
- Power Factor > 0.9
- IP66, ETL, UL8800
- 40,000 Hour Lifetime (Q90/B20)
- 30C max ambient temperature

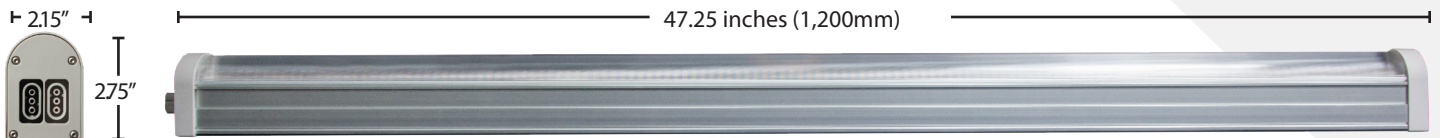
### BEAM ANGLE: 120 DEGREES



### FULL SPECTRUM WHITE



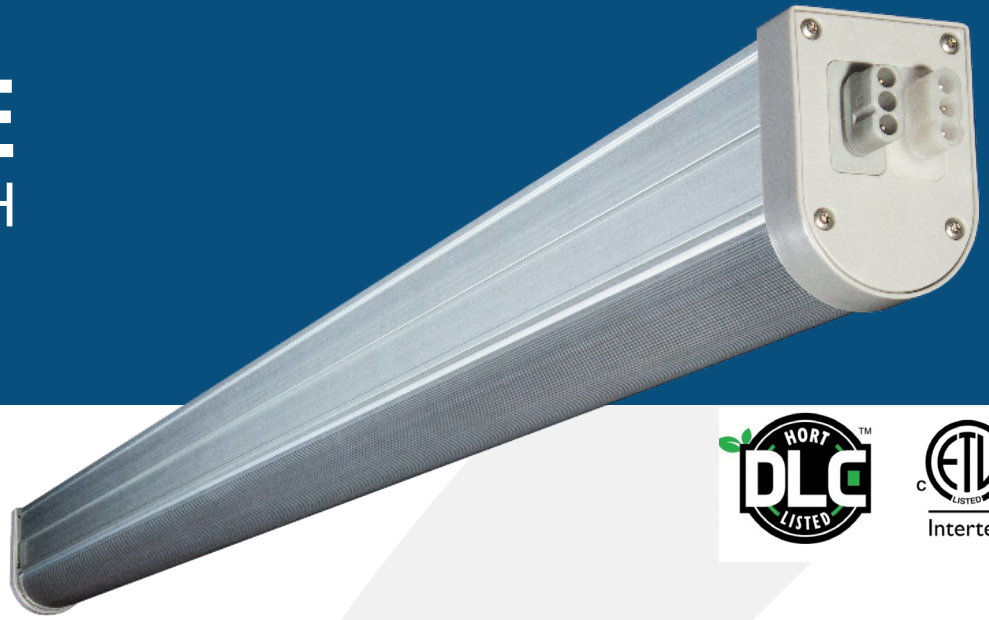
### DIMENSIONS





# THRIVE AGRITECH

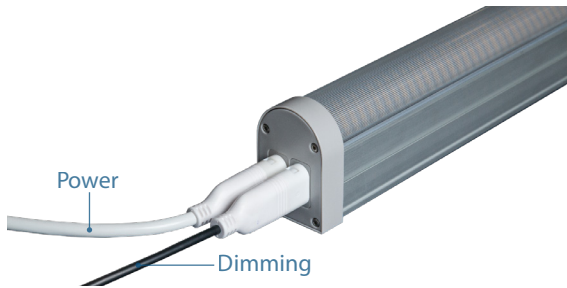
222 Broadway New York, NY 10038  
(800) 205-7216  
thriveagritech.com  
info@thriveagritech.com



## Boost LED Light Bar

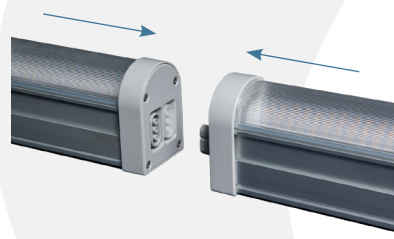
### DIMMING

0-10V dimming from max intensity to off.



### WIRING & INTERCONNECTION

Boost LED light bars can be electrically connected end-to-end or with interconnection cables. See the installation manual for detailed instructions.

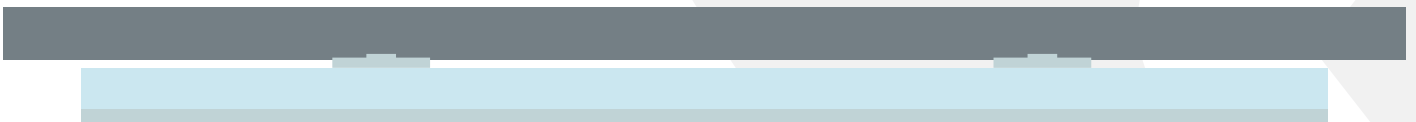


#### MAXIMUM DAISY-CHAIN

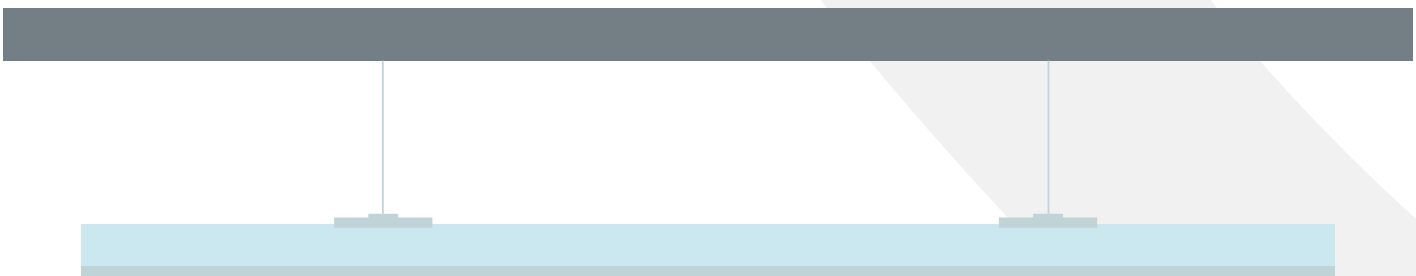
Voltage	Max # of connected	Current/Fixture
110	7	1.10 A
240	12	0.55 A
277	16	0.48 A

### MOUNTING

#### FLUSH MOUNT



#### SUSPENSION MOUNT



### LIGHTING LAYOUTS

Lighting layouts for a variety of horticulture applications are available, if you need a customized lighting layout please contact our customer support team. (800) 205-7216 • thriveagritech.com • info@thriveagritech.com

