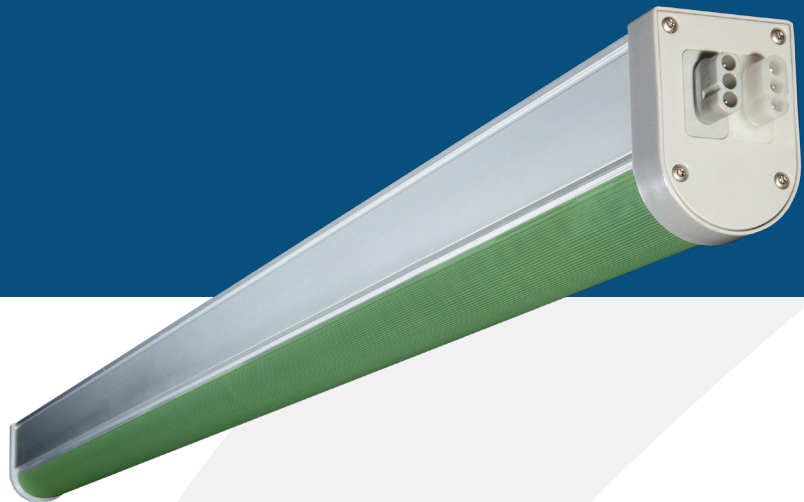




THRIVE AGRITECH

222 Broadway New York, NY 10038
(800) 205-7216
thriveagritech.com
info@thriveagritech.com



VERDANT

Work Light

The new Verdant Work Light is a green LED fixture that allows you to work in your flower room without interrupting dark photoperiod control.

FEATURES & BENEFITS

Spectrum to maintain dark photoperiod

0-10V dimming

UL & cUL Listed

IP66 Waterproof Rated

5-Year Warranty

SPECIFICATIONS

Color: Green, 520nm

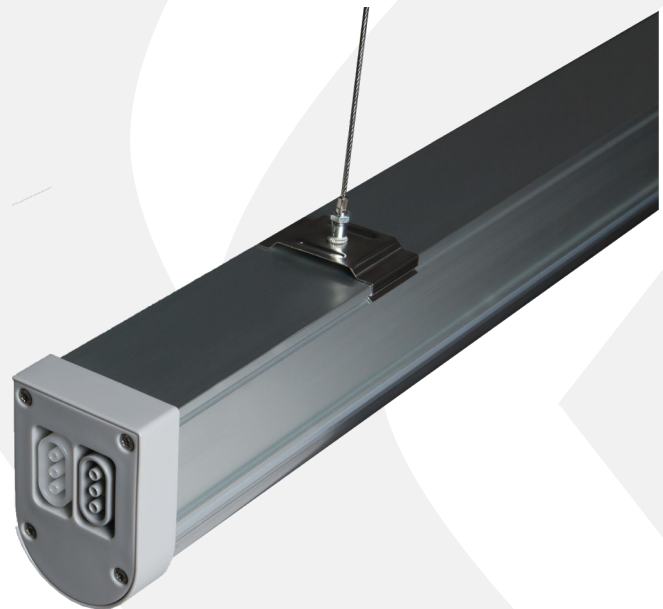
100V-277V

65W Input Power

6,500 lumens

50,000 Hour lifetime

BEAM ANGLE 120 DEGREES



DIMENSIONS

2.15" H



2.75" W

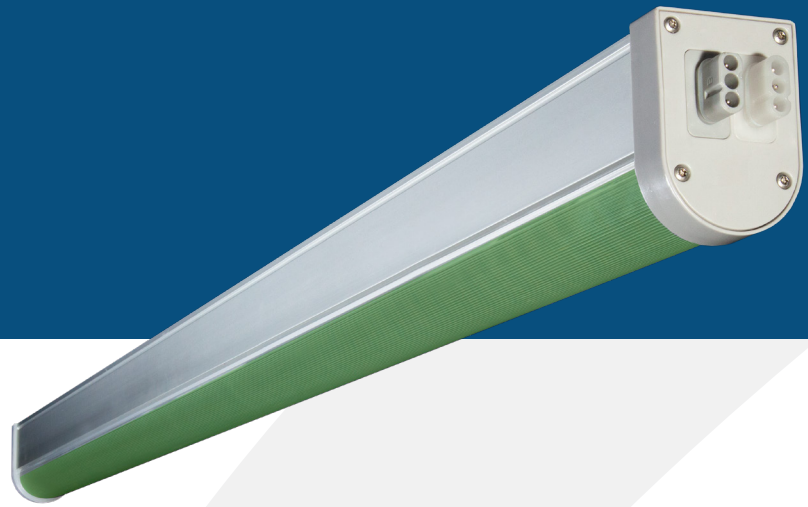
47.25 inches (1,200mm)





THRIVE AGRITECH

222 Broadway New York, NY 10038
(800) 205-7216
thriveagritech.com
info@thriveagritech.com



VERDANT

Work Light

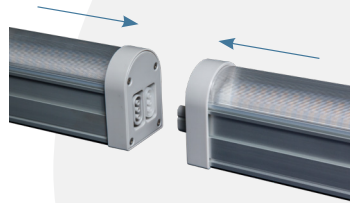
DIMMING

0-10V dimming from max intensity to off.



WIRING & INTERCONNECTION

Verdant work light bars can be electrically connected end-to-end or with an interconnection cable. See the installation manual for detailed instructions.



MAXIMUM DAISY-CHAIN

Voltage	Max # of connected	Current/Fixture
110	10	0.54 A
240	26	0.27A
277	32	0.23A

LIGHT INTENSITY

light intensity vs. distance from the work light are shown below, both in units of foot-candles (lumens/ft²), and lux (lumens/m²).

Intensity: Foot-Candles (lumens/ft²)

Distance to light (feet)	Illumination radius (feet)	Illumination area (ft ²)	Average intensity (ft-candles)
3ft	3	85	56
4ft	4	151	32
5ft	5	236	20
6ft	6	339	14
7ft	7	462	10
8ft	8	603	8

Intensity: Lux (lumens/m²)

Distance to light (meters)	Illumination radius (meters)	Illumination area (m ²)	Average intensity (lux)
1m	1	9	509
1.5m	1.5	21	228
2m	2	38	129
2.5m	2.5	59	82
3m	3	85	57

MOUNTING

Flush mount



Suspension mount



LIGHTING LAYOUTS

If you need a customized lighting design, please contact our customer support team.

