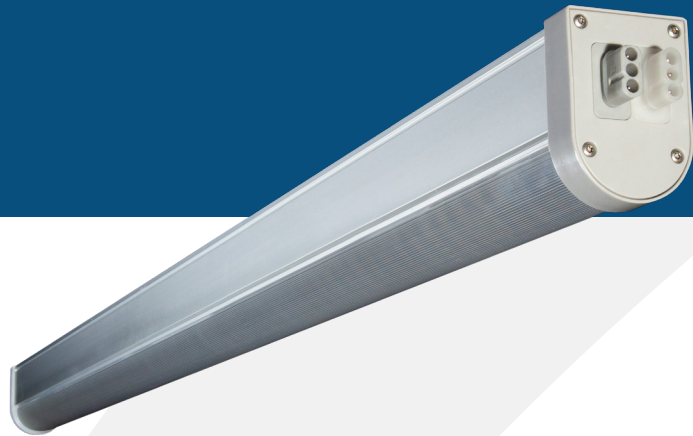




THRIVE AGRITECH

222 Broadway New York, NY 10038
(800) 205-7216
thriveagritech.com
info@thriveagritech.com



INFINITY 2.0

LED Light Bar

Infinity 2.0 is an easy-to-install, high efficiency LED grow light with a spectrum optimized to increase plant biomass and crop yields.

APPLICATIONS & FEATURES

- Multi-tier cannabis veg up to 500 umols/m²/sec
- Multi-tier leafy greens 200-300 umols/m²/sec
- Propagation 50-150 umols/m²/sec
- 0-10V dimming
- Simple wiring and daisy-chaining
- 5-year warranty

SPECIFICATIONS

- TBAR-65W-FS2
- 65W
- 156 umols/sec Light Output
- 2.4 umols/joule Efficiency
- 100V-277V Input Voltage
- Power Factor > 0.9
- IP66, ETL, UL8800
- 40,000 Hour Lifetime (Q90/B20)
- 35C max ambient temperature

DIMENSIONS

2.15" H



2.75" W

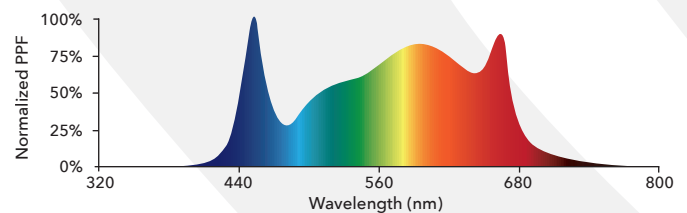
47.25 inches (1,200mm)



BEAM ANGLE 120 DEGREES



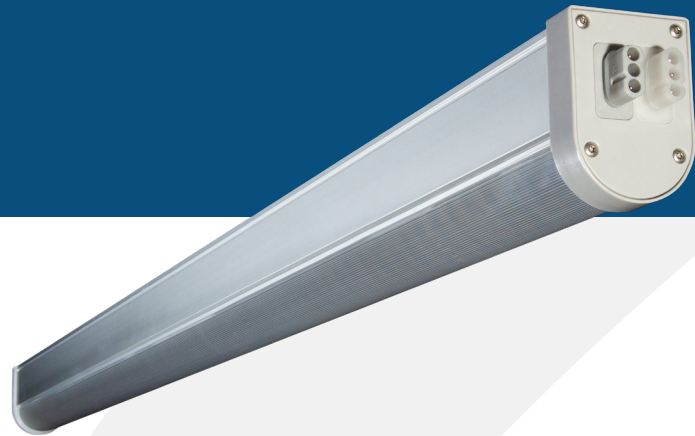
FULL SPECTRUM WHITE





THRIVE AGRITECH

222 Broadway New York, NY 10038
(800) 205-7216
thriveagritech.com
info@thriveagritech.com



INFINITY 2.0

LED Light Bar

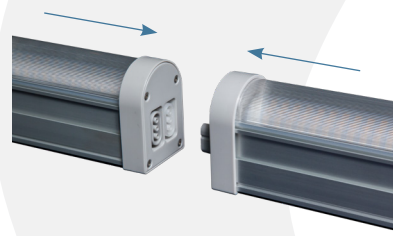
DIMMING

0-10V dimming from max intensity to off.



WIRING & INTERCONNECTION

Infinity 2.0 LED light bars can be electrically connected end-to-end or with an interconnection cable. See the installation manual for detailed instructions.

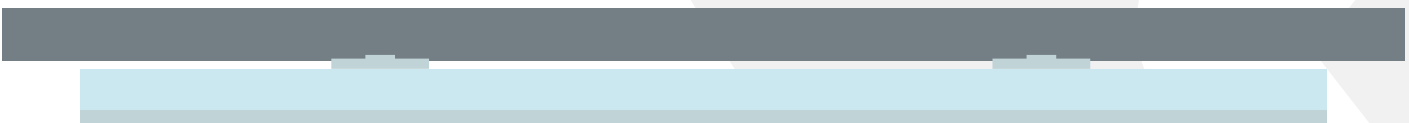


MAXIMUM DAISY-CHAIN

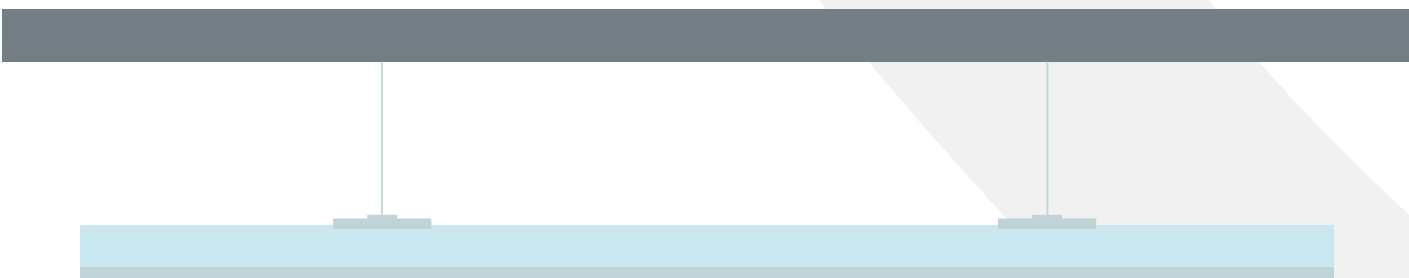
| Voltage | Max # of connected | Current/Fixture |
|---------|--------------------|-----------------|
| 110 | 10 | 0.54 A |
| 240 | 26 | 0.27A |
| 277 | 32 | 0.23A |

MOUNTING

FLUSH MOUNT



SUSPENSION MOUNT



LIGHTING LAYOUTS

Lighting layouts for a variety of horticulture applications available, if you need a customized lighting layout, please contact our customer support team. (800) 205-7216 • thriveagritech.com • info@thriveagritech.com

