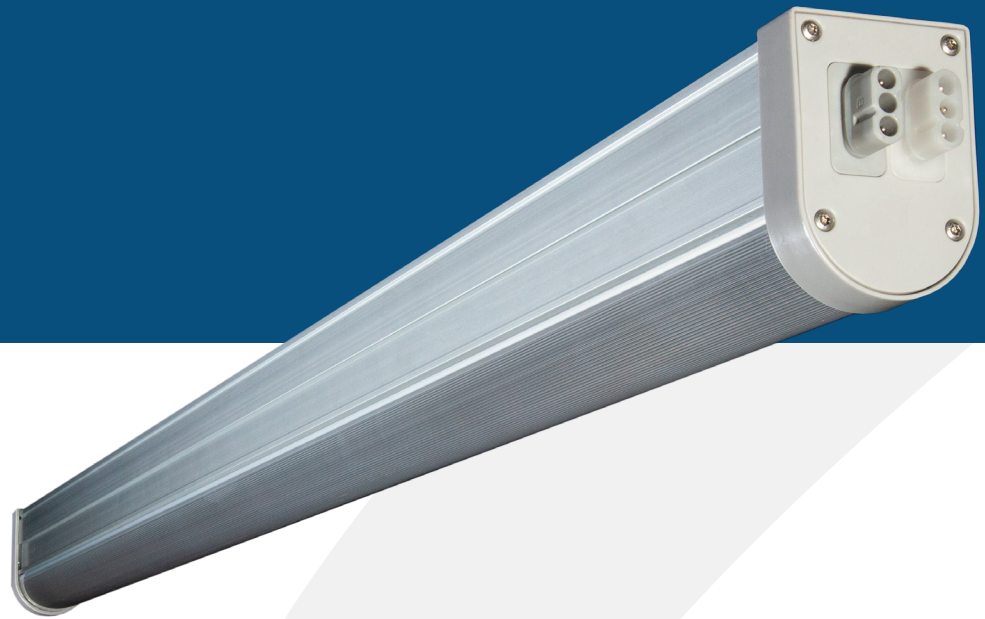




# THRIVE AGRITECH

222 Broadway New York, NY 10038  
(800) 205-7216  
thriveagritech.com  
info@thriveagritech.com



## BOOST LED Light Bar

Boost is a high output, high efficiency, LED grow light designed to optimize plant growth for indoor farming applications including cannabis and leafy greens.

### APPLICATIONS & FEATURES

Multi-tier cannabis flower & veg up to 1,000 umols/m<sup>2</sup>/sec

Single-tier leafy greens 200-300 umols/m<sup>2</sup>/sec

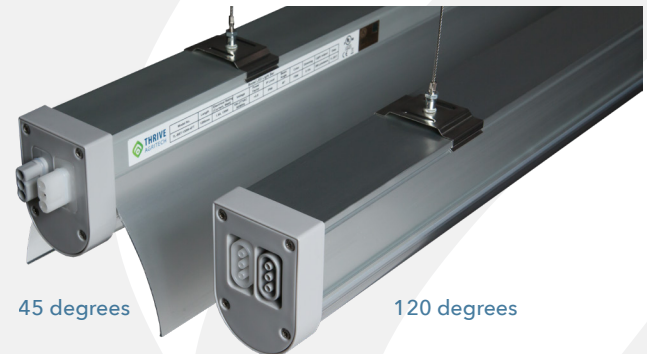
45 & 120 beam angles

0-10V dimming

Simple wiring and daisy-chaining

5-year warranty

### BEAM ANGLES: 45 & 120 DEGREES



45 degrees

120 degrees

### SPECIFICATIONS

130W

312 umols/sec Light Output

2.4 umols/joule Efficiency

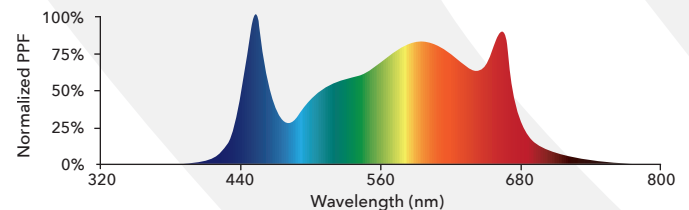
100V-277V Input Voltage

Power Factor > 0.9

IP66, ETL, UL8800, DLC

40,000 Hour Lifetime (Q90/B20)

### FULL SPECTRUM WHITE



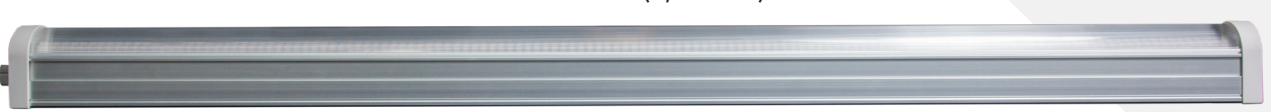
### DIMENSIONS

2.15" H



2.75" H

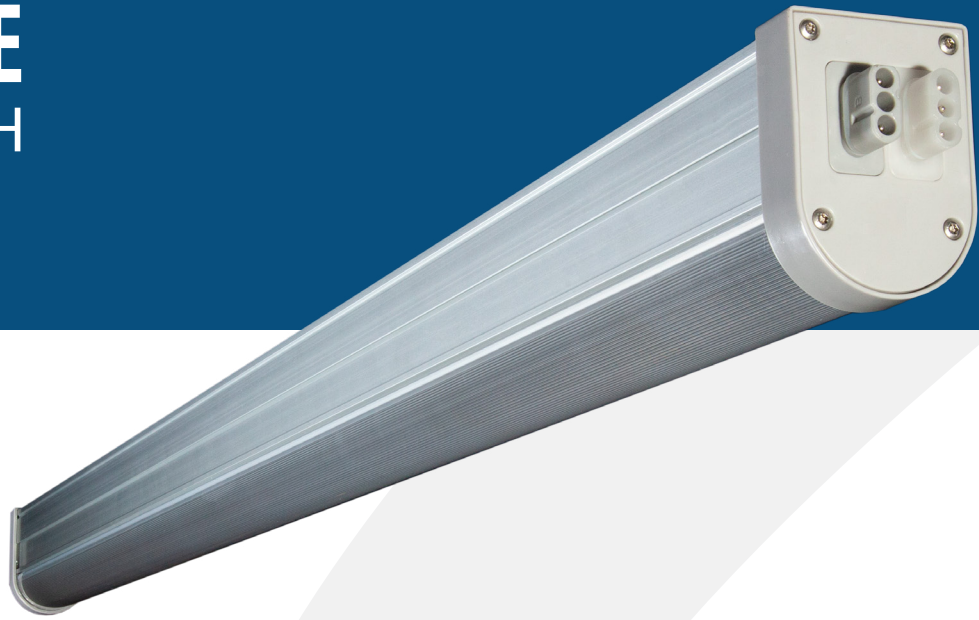
47.25 inches (1,200mm)





# THRIVE AGRITECH

222 Broadway New York, NY 10038  
(800) 205-7216  
thriveagritech.com  
info@thriveagritech.com



## BOOST LED Light Bar

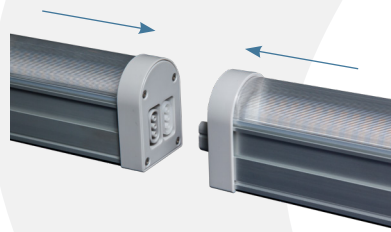
### DIMMING

0-10V dimming from max intensity to off.



### WIRING & INTERCONNECTION

Boost LED light bars can be electrically connected end-to-end or with interconnection cables. See the installation manual for detailed instructions.

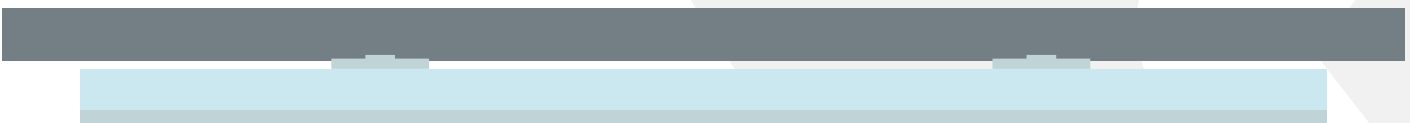


#### MAXIMUM DAISY-CHAIN

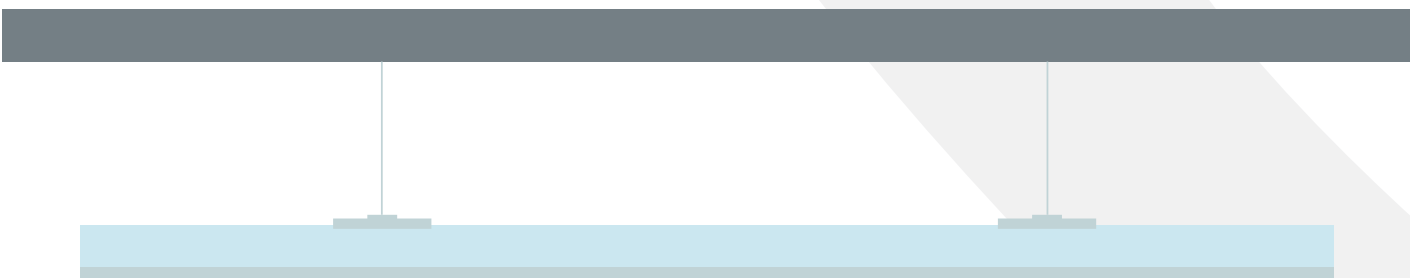
Voltage	Max # of connected	Current/Fixture
110	7	1.10 A
240	14	0.55 A
277	19	0.48 A

### MOUNTING

#### FLUSH MOUNT



#### SUSPENSION MOUNT



### LIGHTING LAYOUTS

Lighting layouts for a variety of horticulture applications available, if you need a customized lighting layout, please contact our customer support team. (800) 205-7216 • thriveagritech.com • info@thriveagritech.com

