

Installation Manual

Infinity LED Light

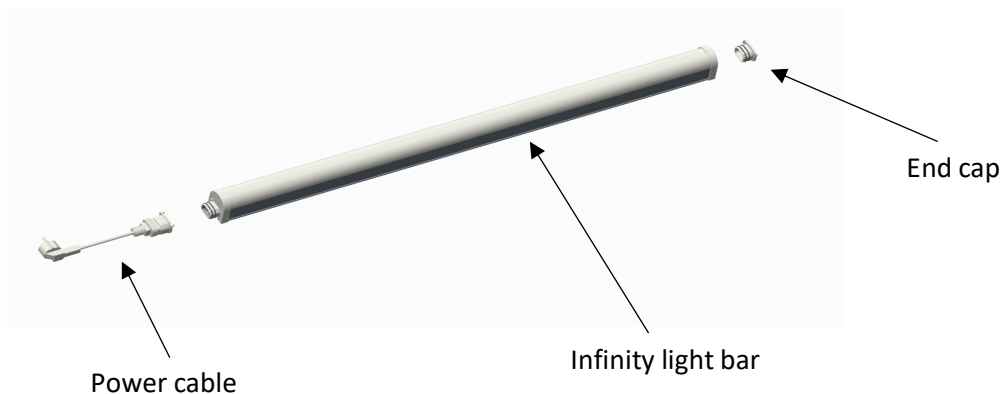


Background

This manual provides guidance on installation of the Infinity LED Linear light and associated accessories. Please contact customer support with any installation questions not covered in this guide.

Product Overview

An exploded view of the Infinity light with power cable (p/n TL-PC2) and end cap is shown below.



General Guidelines

- Confirm the overall integrity of the light fixture prior to installation.
- Maintain at least 8 inches (0.2 meters) between the light fixture and any combustible materials.
- Keep the light fixture away from sources of heat.
- The Infinity LED light is an indoor luminaire that should be operated within an ambient temperature range of -20°C to 40°C.
- Ensure power is off before installation. Installation must be carried out by qualified electricians.
- To clean the light fixture, switch power off and use a dry cloth without corrosive cleaning agents.

Daisy-Chaining & Current Ratings

The current to each light fixture at the operating conditions of 58 watts/fixture and 120V, 240V & 277V is shown in the table below. Also shown is the maximum number of fixtures that can be linked together at each voltage. 16AWG wire is recommended.

Parameter	120 Volts	240 Volts	277 Volts
Nominal current / fixture	0.48A	0.24A	0.21A
Max # of fixtures linked together in a daisy-chain	12 fixtures	30 fixtures	36 fixtures

Mounting & Connection Guidelines

The Infinity LED light can be flush mounted or suspension mounted. Additionally, the light fixtures can be daisy-chained together with end-to-end connections or with cables. Accessories for each type of mounting configuration is shown below.

Mounting Type	Mounting Accessories	Daisy-chaining end-to-end connections	Daisy-chaining cable connections
Flush Mount	Power Cable: TL-PC2	Interconnection Clip: TL-INCLIP	Interconnection Cable: TL-INC2
	Slide & Lock Clip: TL-SLIP		
Suspension Mount	Power Cable: TL-PC2	Interconnection Bar: TL-INBAR	
	Suspension Kit: TL-SKIT		

Flush Mount Installation

Step 1

Prepare accessories.
Clip, anchor, screw, washer.



Step 2

Install slide & lock clips using anchor, screw and washer.



Step 3

Push luminaire to secure to clips.



Step 4

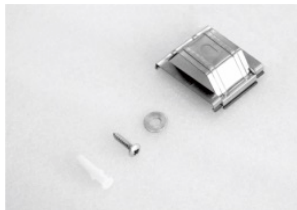
Press slide & lock clips to locking position.



Flush Mount Installation - End-to-End Daisy-Chain

Step 1

Prepare accessories.
Clip, anchor, screw, washers.



Step 2

Install slide & lock clips with anchors.



Step 3

Push luminaires into clips and connect at ends.



Step 4

Prepare interconnection clip at connection joint.



Step 5

Press Interconnection clip into position.



Suspension Mount Installation

Step 1

Prepare accessories.
Steel rope, slider.



Step 2

Loosen screws on rope.



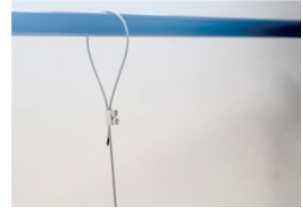
Step 3

Adjust length of rope.



Step 4

Tie rope to support
and tighten screws.



Step 5

Put slider in channel of
fixture and tighten nuts.



Suspension Mount Installation - End-to-End Daisy-Chain

Step 1

Prepare accessories.
Interconnection bar.



Step 2

Suspend luminaires as
described previously.



Step 3

Slide interconnection
bar in fixture channel.



Step 4

Connect luminaires
end-to-end.



Step 5

Tighten screws to secure
bar in position.



Completed Installation

Two luminaires suspended
and daisy-chained.

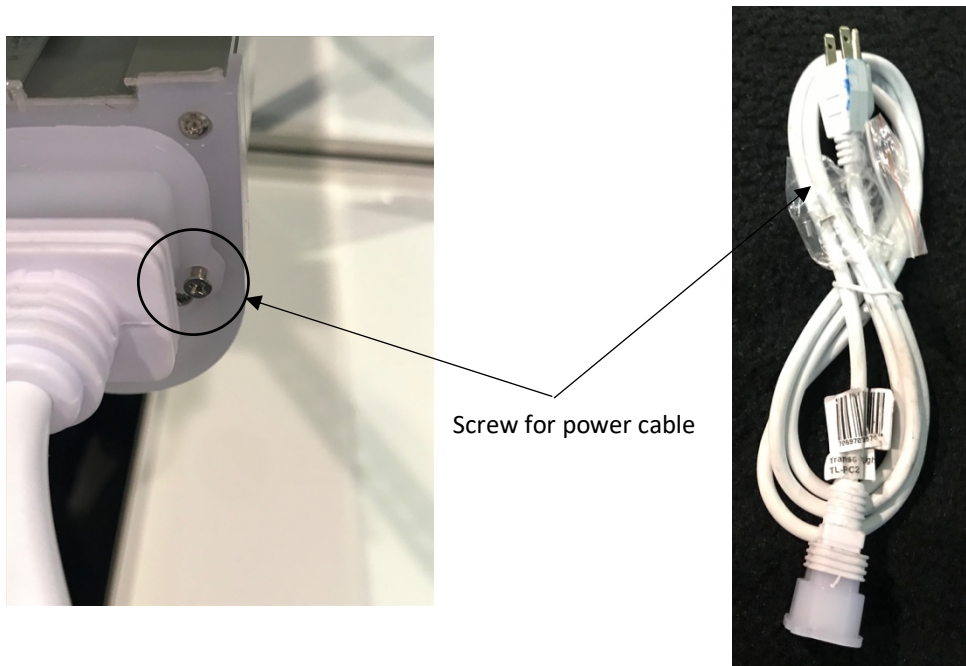


Electrical connections

It is important to ensure all electrical connections are robust and secure since a loose connection can result in an electrical malfunction.

Power Cable

Secure the power cable to the light fixture power connector by pressing the cable connector firmly into the mating connector on the fixture. A screw is provided with the power cable to safeguard against the cable loosening over time. Once the power cable is connected to the fixture, tighten the screw – see picture below.



End-to-end daisy-chain connections

Be sure to use the interconnection clip for flush mount installations and the interconnection bar for suspension installations to create a secure electrical connection when daisy-chaining fixtures together in an end-to-end fashion. Below is a view of the interconnection bar connecting two Infinity lights together.

