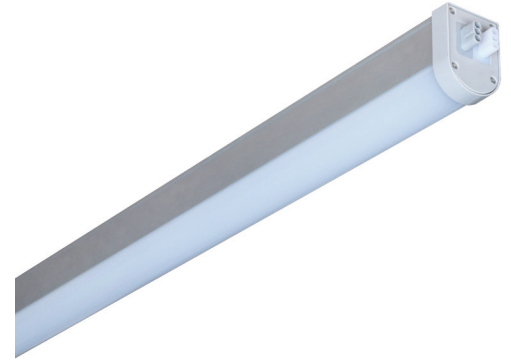


Boost yields by lighting from the bottom!



Boost LED Light Bar



Typical payback in a single harvest

UNDER CANOPY LIGHTING

Getting light to penetrate to the bottom of the canopy is an age old problem. Production at the lower levels of the plant is often a fraction of that at the top. Boost LED light bar solves this problem when used as an under canopy light. Growers have seen dramatic increases in production that typically pay for the added cost of the lights after the first harvest!



Product Overview

FEATURES & BENEFITS

- 130W per light bar
- 100V-277V Input
- 2.2 umols/joule efficiency
- 0-10V dimming
- Simple wiring & daisy-chaining
- IP66 Waterproof
- UL & cUL listed
- 62,000 Hour Lifetime
- 5 year warranty

